

American AVK Series 34 Indicator Posts Exploded Parts Breakdown

Series 3400
Telescopic Post Indicator

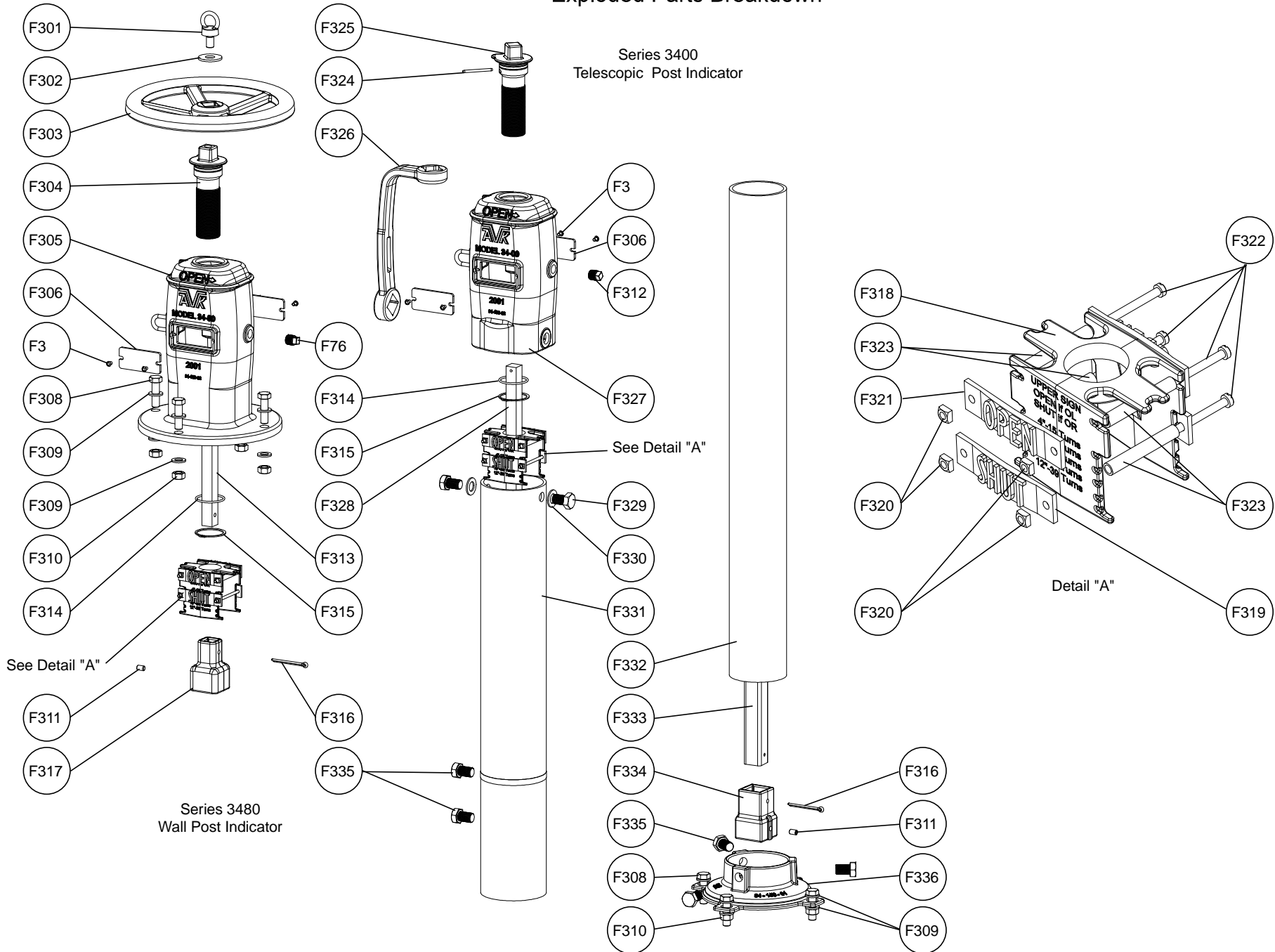


Fig. 1

| Item No. | Description | Material |
|----------|----------------------------------|--------------------------------------|
| F301 | Eyebolt | Zinc Plated Steel |
| F302 | Eye Bolt Washer M16x50x3 | Zinc Plated Steel |
| F303 | Handwheel (3480) | Grey Iron, ASTM A126, "B" |
| F304 | Stem Nut - Series 3480 | Copper Alloy |
| F305 | Wall Post Head | Ductile Iron, ASTM A536 |
| F306 | Window | Acrylic (PMMA) |
| F3 | Window Screw | 316 Stainless steel |
| F308 | Flange Bolt | Zinc Plate, 304, 316 Stainless steel |
| F309 | Flange Bolt Washer | Zinc Plate, 304, 316 Stainless steel |
| F310 | Flange Bolt Nut | Zinc Plate, 304, 316 Stainless steel |
| F311 | Wrench Nut Adapter Set Screw | 304 Stainless steel |
| F312 | 1/2" Pipe Plug | Zinc Plated Steel |
| F313 | Wall Post Stem | Mild Steel |
| F314 | Stem Nut O-ring | NBR |
| F315 | Stem Nut Snap Ring | 316 Stainless steel |
| F316 | Cotter Pin | 316 Stainless steel |
| F317 | Wrench Nut Adapter (3480) | Ductile Iron, ASTM A536 |
| F318 | Target | Copper Alloy |
| F319 | Shut Plate | Painted Aluminum |
| F320 | Plate Nut | Zinc Plated Steel |
| F321 | Open Plate | Painted Aluminum |
| F322 | Plate Attachment Screw | Zinc Plated Steel |
| F323 | Target Spacer | Mild Steel |
| F324 | Upper Stem Attachment Pin (3400) | 316 Stainless steel |
| F325 | Stem Nut - Series 3400 | Copper Alloy |
| F326 | Operating Wrench | Ductile Iron, ASTM A536 |
| F327 | Telescopic Post Head | Ductile Iron, ASTM A536 |
| F328 | Telescopic Post Upper Stem | Mild Steel |
| F329 | Post Head Attachment Bolt | Zinc Plate, 304, 316 Stainless steel |
| F330 | Attachment Bolt Washer M21x37x3 | Zinc Plate, 304, 316 Stainless steel |
| F331 | Upper Barrel | ASTM A513-98 Carbon Steel Pipe |
| F332 | Lower Barrel | Ductile Iron, ASTM A536 |
| F333 | Lower Stem | Mild Steel |
| F334 | Wrench Nut Adapter (3400) | Ductile Iron, ASTM A536 |
| F336 | Telescopic Post Attachment Bolt | Zinc Plate, 304, 316 Stainless steel |
| F336 | Bell Adapter | Ductile Iron, ASTM A536 |